

WasteDoctor™

-

WasteChef™

-

WasteClinic™

-

WasteBase™

-

WasteMaster™

products of:



Consolidated
Waste Management

Waste Treatment Solutions

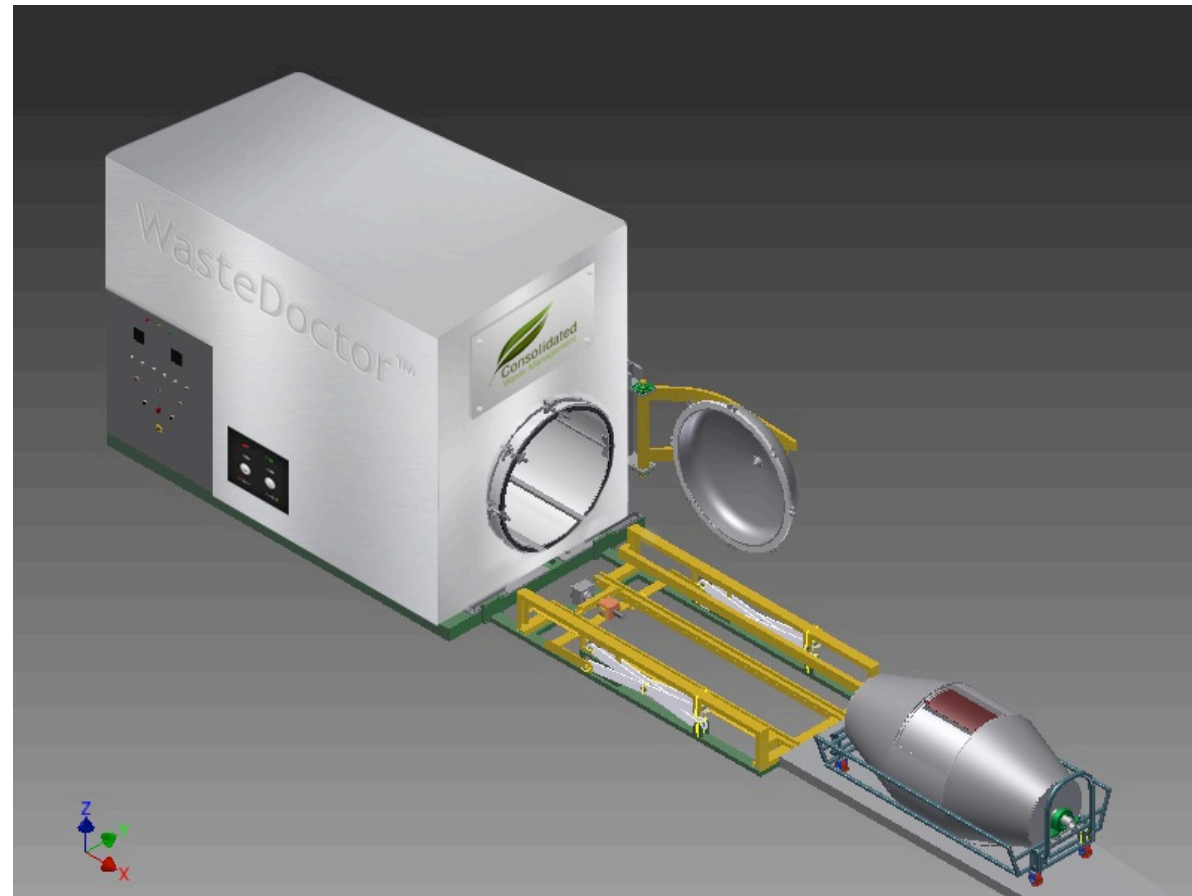
An ISO 9001:2008 Company



- India today stands as one of the fastest growing nations in the world.
- From a population of 843 Million in 1990, India's population has ballooned to a staggering 1.19 Billion in 2010.
- A Tier 1 city like Mumbai produces a *reported* 11,600 tonnes of municipal solid waste per day, and even a rapidly developing city like Pune produces a staggering 2,700 *reported* tonnes of municipal solid waste in a day. With waste volumes like these, our cities are left strangled and underfunded when it comes to investing in efficient waste processing, treatment, recycling and disposal technologies.
- The centralised model does not work as it stands today, and most often, waste is simply dumped into landfills untreated, ensuring that diseases, co-mingling & cross contamination of waste occurs continuously, which is hugely detrimental to the health of the population & damaging to our environment.
- This is particularly concerning when dealing with medical/clinical waste which is inherently infectious.



CWM's Product Range & Strategic Innovations



CWM's Product Range



- CWM offers five product ranges whose design & operation is best suited to a number of end users:
 1. WasteDoctor™ - is designed to suit the requirements of hospitals in order to treat their waste internally prior to dispatching the treated waste to municipal waste facilities.
 2. WasteChef™ - is designed to suit the hospitality industry, such as large hotels & food production & processing facilities. The canister design & operation has been tweaked to best suit the high moisture content of food waste.
 3. WasteClinic™ - is designed to be mounted onto a standard road truck, which allows the machine to be transported around city streets or from one village to another in rural areas of our country, in order to sterilise & treat smaller waste quantities dispersed across a larger footprint.
 4. WasteBase™ - is exclusively for municipalities with centralised waste treatment facilities & although similar to the above products, is designed to a scale that can efficiently handle large quantities of commingled waste & additionally has higher levels of automation in order to reduce worker strains & improve operational efficiencies.
 5. WasteMaster™ - designed to take advantage of the steam, electricity & water generated on large marine vessels, the technology is adapted to treat food and other waste on a ship before it even makes port, greatly reducing port fees for waste removal.

Strategic Innovations



- CWM's new range of products are a textbook example of Strategic Innovation. CWM is a company moving towards a unique product design & industry solution, in order to clearly define itself as a leader in Best Practices for waste management solutions.
- CWM's waste management products feature four key aspects to their design that set them apart from competitors & alternative technologies:

1. The Patented "Removable Rotating Canister"
2. The Thermic Fluid Heat System
3. The Patented "Integrated Dehydration System"
4. The Radiator Fan Cooling System



Strategic Innovations...



6

A brief description of the key benefits to our innovations

- 1. Patented removable & semi-removable rotating canister** – This technology ensures safe & quick loading, unloading & handling of waste. It further ensures that the waste sterility effectively 100% of the time & furthermore protects the main chamber from any corrosion or erosion, which in turn guarantees a long life with minimal maintenance.
- 2. Thermic fluid heat system** – This optional system can replace our already efficient steam boiler, yielding 20% greater heat generation efficiency & no boiler maintenance as it is a completely closed loop system.
- 3. Patented integrated dehydration system** – This technology uses residual heat generated by the sterilisation cycle to blow hot air into the canister, ensuring bone-dry waste output (5%-10% moisture), which makes the treated waste far easier to unload, segregate & shred for final disposal.
- 4. Radiator cooling system** – much like the radiator system in an automobile, this heat exchange system recycles water when cooling down the chamber for waste discharge. Our machines use as little as 10% of the typical water consumed by cooling down the water & re-circulating it instead of using fresh water.

Environmentally Better



- Larger waste management facilities can reasonably expect to see significant cost advantages to using our unique products.
- One of our key goals is to ensure a swift return on investment to our customers, and furthermore, even provide our customers with the potential of transforming their waste management systems from cost centres into profit centres.

| | | |
|---|---|--|
|  <p>PLASTICS</p> |  |  |
| <p>Plastics Can be separated out and recycled or sold on, which greatly reduces the unnecessary pollutants being exposed to the environment.</p> | <p>Non-Combustible Solid Waste Can be shredded and then sent to a landfill (Much smaller quantities would require landfilling than non-segregated waste)</p> | <p>Combustible Solid Waste Can be be reused with any existing incinerator in order to burn the waste and create energy to power CWM's thermic fluid system, thereby further reducing energy requirements/ consumption of the facilities</p> |





Bottom Line Benefits

- CWM prides itself on having created innovative technologies that significantly improve the operational & financial efficiency & viability of our end user's waste management solution:
 1. Significant reduction in transportation costs, as the overall volume of waste reduces by upto 80% for every batch of waste treated.
 2. Substantial energy efficiency with our Thermic Fluid heat exchange system, whose wasted heat energy is re-circulated through the dehydration blower system.
 3. Innovative radiator cooling system that significantly reduces the use of water by re-circulating water through the cooling system.
 4. Highest safety standards by significantly minimising human contact with the waste thanks to the innovation of our rotating canister design.
 5. Fully automated touch screen interface (Lan network connectivity) to ensure precise, recorded results every time which can be integrated into existing computer systems.

For Our Customers



- Guarantee of Sterility
- Technology of International standards – Global Patent Pending
- Consultation for establishing centralised & in-hospital facilities
- Wide product range – from 25L to 3,000 L approx. capacity
- Other related products are also available (based on hospital requirements) – e.g. shredders, waste carts / trolleys & puncture proof containers, etc
- Installation & operator training included
- Annual Maintenance Contracts (AMC) are offered

Tata Memorial Cancer Centre Case Study



10

- 650 bedded Premier Cancer Institute of India
- Yearly Waste Generation – Over 90,000 Kgs
- Replaced inadequate onsite incinerator with the eco-friendly Autoclave supplied by CWM
- Selection panel comprised of: Hospital Administrators & Head of Microbiology, Executive & Assistant Health Officers of the BMC, Members of the W.H.O. & Duke Medical University, USA

Tata Memorial – Proven Success Story



Upon installation
Sept. 1999



Over a decade on
2013



- Total waste treatment cost is substantially lower than tradition external waste disposal
- The TMCC machine has a 100% track record with respect to spores testing in over 10 years of operation
- As impressive as the cost savings at TMCC have been, it is worth noting that our newer WasteDoctor™ presents far greater operational & cost efficiency to this now outdated model.



Tata Memorial Hospital – Data 2012

- January – December 2012
- Total waste treated = 92,766 Kg.
- Average daily waste treated = 311 Kg.

| <i>Item Description</i> | <i>Amount</i> |
|---------------------------------------|----------------------|
| No. of loads performed | 981 |
| Total quantity of waste treated (Kg.) | 92,766 |
| Weight of blood bags treated (Kg.) | 3,899 |
| Weight of tissue treated (Kg.) | 3,767 |
| Yellow bags weight (Kg.) | 86,583 |
| Sharp containers weight (Kg.) | 6,183 |
| Weight of empty vials (Kg.) | 12,788 |
| Cytotoxic Drugs (Kg.) | 592 |

Contact Us



INDIA

15G Raheja Centre
214 Free Press Journal Rd.
Nariman Point
Mumbai 400 021

T: +91.22.2283.5040

F: +91.22.2283.5044

E: info@cwmwaste.com

W: www.cwmwaste.com



USA

2061 Street
Raymond Ave.
New York
NY 10462

T: +1.646.825.1323

E: info@cwmwaste.com

W: www.cwmwaste.com



UAE

P.O. Box 12713
Off Baniyas Rd.
Dubai

T: +9715.0646.3755

E: info@cwmwaste.com

W: www.cwmwaste.com

An ISO 9001:2008 Company